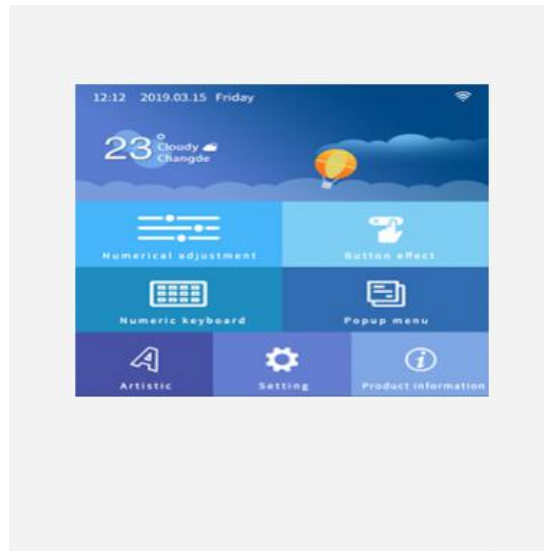


# TC035C13U05 TC035C13W05

3.5 Inches, 320\*RGB\*240, 65K Colors



## ● Display

Item	Parameter	Description
Color	65K (65536) colors	16 bit color 5R6G5B
Active Area (A.A.)	68.5mm (W) * 51.0mm (H)	320 * 240
Resolution	320 * 240	90° rotation (240 * 320)
Backlight	LED	-
Brightness	300 nit	64 levels adjustment(It's not recommend to set brightness to 1%~30% of the maximum,which may lead a flicker)
Display Types	-	IPS full view

Note: You can use dynamic screen saver wallpapers to avoid afterimages caused by fixed page display for a long time.

## ● Voltage & Current

Item	Conditions	Min	Typ	Max	Unit
Power Voltage	-	110	220	230	V

Recommended power supply: AC 220V

## ● Operating Environment

Item	Conditions	Min	Typ	Max	Unit
Working Temperature	60%RH	0	25	70	°C
Storage Temperature	-	-30	25	70	°C
Working Humidity	25°C	10%	60%	90%	RH
Protective Paint	-	-	None	-	-

## ● Interface

Item	Conditions	Min	Typ	Max	Unit
Baud Rate	standard	7841	115200	7833600	bps
(V_AB)	Output 1	2.5	5.0	-	V
	Output 0	-	-5.0	-2.5	V
(V_AB)	Input 1	0	2.5	-	V
	Input 0	-	-2.5	-0.2	V
Interface	RS485				
Socket	11Pin_5.08mm				
USB Interface	None				
SD Card Slot	Yes (FAT32 file format, SDHC)				
WIFI Module	TC035C13U05: None TC035C13W05: Yes				

## ● Memory

Item	Typ value	Features	Typ value	Unit	Description
FLASH	128Mbytes	Space of Font	64	Mbytes	Store font, icon libraries, music files, and other binary files. Font and audio file share the back half (32 Mbytes) of Font Space.
		Picture Storage	64	Mbytes	245 full-screen pictures.
RAM	128Kbytes	Variable Storage Space	/	/	Data is not saved when power down
Nor Flash	320Kbytes	User database	/	/	Data is saved when power down

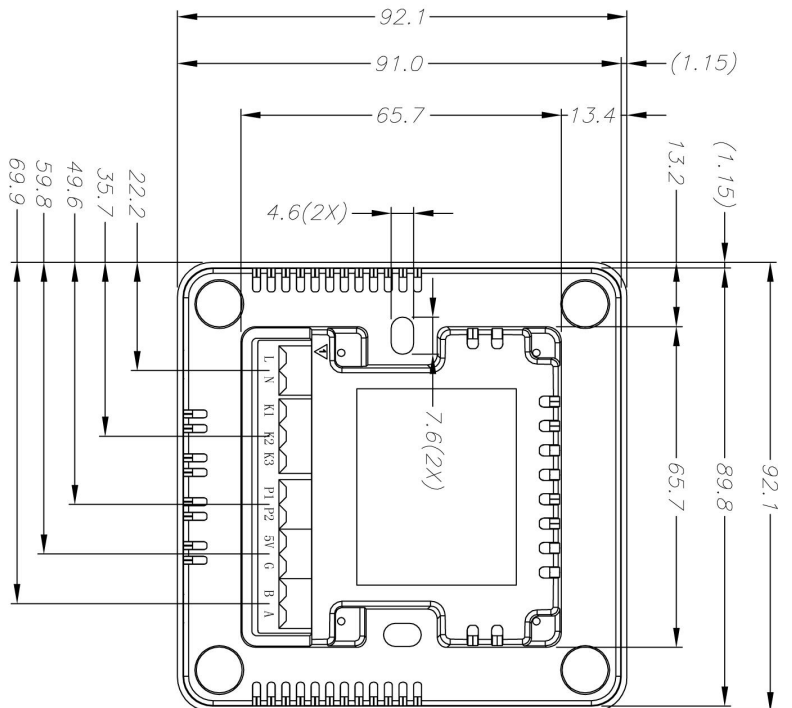
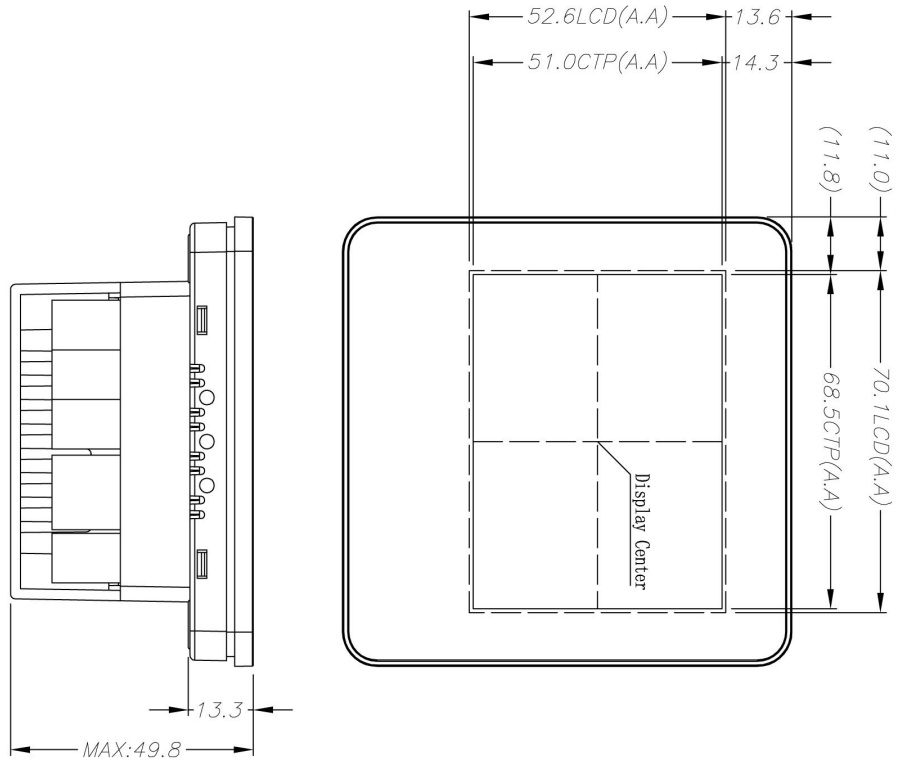
- **Peripheral**

Peripherals Acquired	
Peripherals	Buzzer, Capacitive touch screen, Temperature sensor, RTC

- **Packing Capacity & Dimension**

Dimension				
Dimension	92.1 (W) * 92.1(H) * 49.8 (T)mm			
Net Weight	TC035C13U05: 170g TC035C13W05: 175g			
Packing Capacity				
Model	Size	Layer	Quantity/Layer	Quantity(Pcs)
Carton1:	220mm(L)*160mm(W)*47mm (H)	-	-	-
Carton2:	250mm(L)*200mm(W)*80mm (H)	1	2	2
Carton3:	320mm(L)*270mm(W)*80mm (H)	1	4	4
Carton4:	450mm(L)*350mm(W)*300mm(H)	-	-	-
Carton5:	600mm(L)*450mm(W)*300mm(H)	1	40	40

Disclaimer: The product design is subject to alternation and improvement without prior notice.



Pin	Definition	Type	Description
L	1	L	Live Wire
N	2	N	Zero Line
K1	3	K	AC OUT
K2	4	K	AC OUT
K3	5	K	AC OUT
P1	6	P	PWM1 OUT
P2	7	P	PWM2 OUT
5V	8	P	DC OUT
G	9	P	GND
B	10		485-
A	11		485+

Instruction: The transparent area of touch screen is designed to be smaller than active area (A.A.) of LCD, to prevent the LCD frame from being seen.

Unmarked Tolerance is +/-0.3mm  
Active area is marked in Dash Lines

Model	TC035C13U05			TC035C13U05		
Drawing	A 4	Drawn	DWIN	Date		
Scale		Review		Date		
Unit	MM	Approve		Date		

Beijing DWIN Technology Co.Lt



**Record of Revision**

<b>Version</b>	<b>Revise Date</b>	<b>Content</b>	<b>Editor</b>
00	2023-02-24	First Edition	YML

Please contact us if you have any questions about the use of this document or our products, or if you would like to know the latest information about our products:

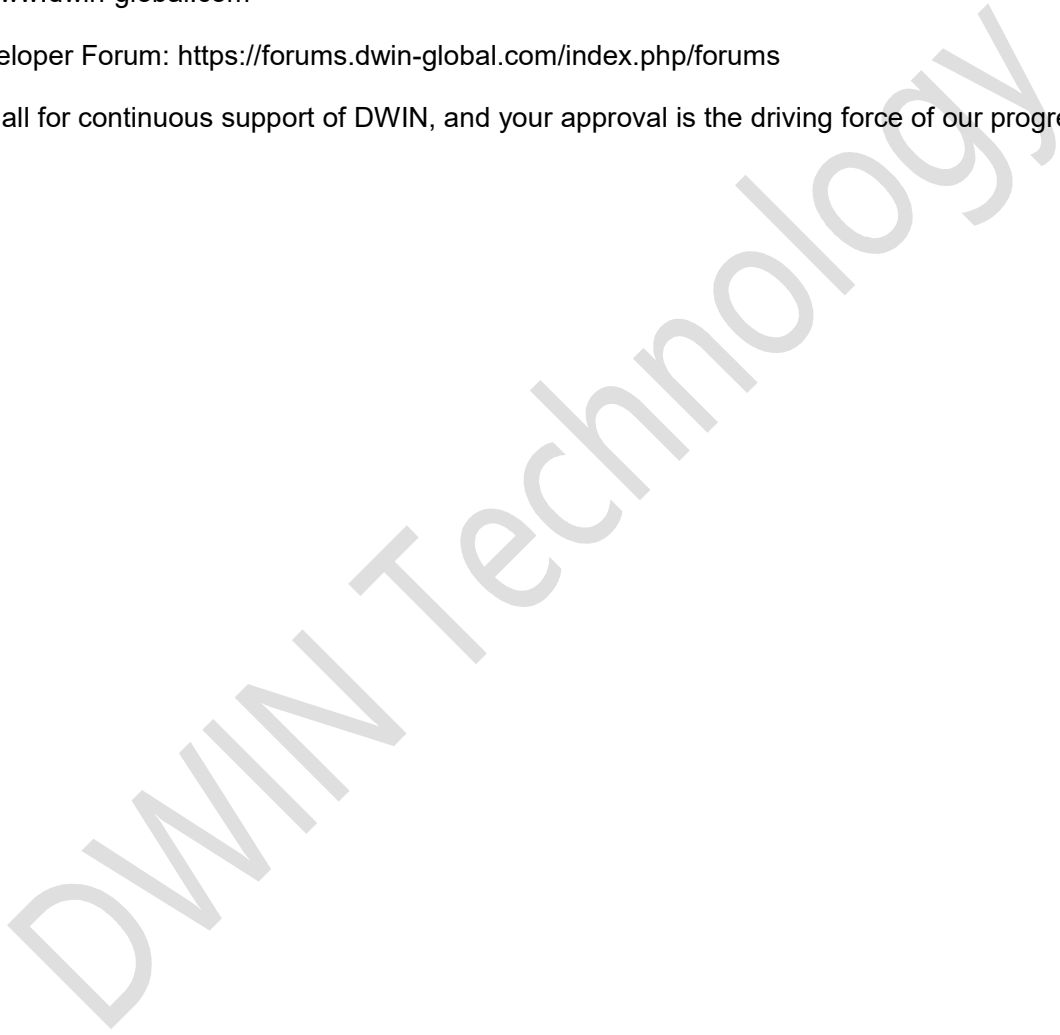
Customer service Tel: +86-400-018-9008

Customer service E-mail: [dwinhmi@dwin.com.cn](mailto:dwinhmi@dwin.com.cn)

Website: [www.dwin-global.com](http://www.dwin-global.com)

DWIN Developer Forum: <https://forums.dwin-global.com/index.php/forums>

Thank you all for continuous support of DWIN, and your approval is the driving force of our progress!



# Installation Schematic

