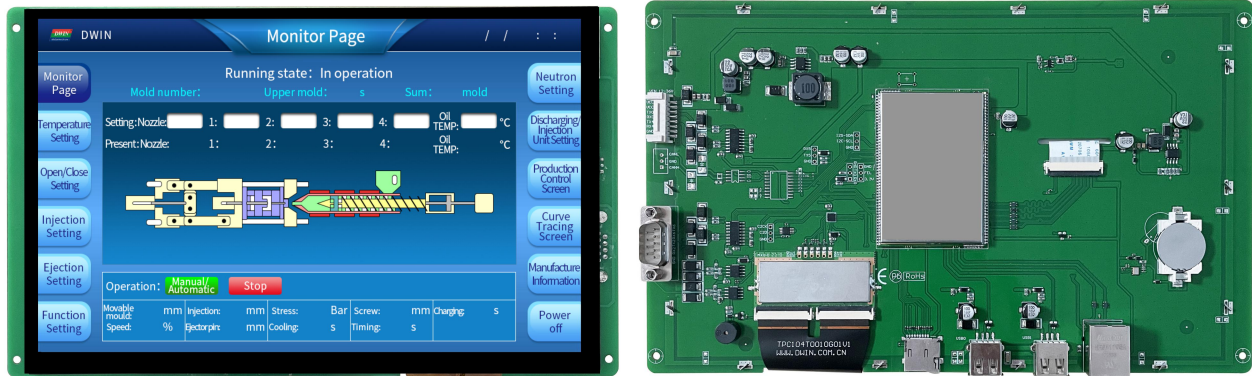


DMT12800T101_35WTC



Features:

- Industrial Linux intelligent display terminal based on Allwinner A40i, running Linux3.10 operating system.
- 10.1-inch, 1280*800 pixels resolution, 16.7M colors, IPS-TFT-LCD, wide viewing angle, Capacitive Touch.
- Adopt QT environment for secondary development.
- Available for multi-language, vector font library, picture library, video library and audio library.
- Connect to a PC with a network cable to download and update projects.
- Available for RS232, RS422 and Ethernet port to connect and communicate with external devices.

● Master Control Parameters

Properties	Parameters
Motherboard Level	Industrial
CPU	Allwinner A40i Quad-core ARM CortexTM-A7 Processor
OS	Linux3.10
FLASH	8Gbytes EMMC
RAM	1Gbytes DDR3

● Display Parameters

Properties	Parameters	Description
Color	16.7M (16777216) colors	24-bit color 8R8G8B
Panel Type	IPS	IPS LCD with wide view angle
Viewing Angle	85/85/85/85 (L/R/U/D)	Best view angle: symmetrical
Active Area (A.A.)	217.0mm(W)*135.6mm(H)	-
View Area (V.A.)	218.0mm(W)*136.6mm(H)	-
Resolution	1280 * 800	Available for 0/90/180/270rotated display
Backlight	LED	30000H (time of the brightness decaying to 50% on the condition of continuous working with the maximum brightness)
Brightness	350nit	100 levels adjustment (It's not recommended to set brightness to 1%~30% of the maximum, which may lead to LCD flicker.)
Note: You can use dynamic screen saver wallpapers to avoid afterimages caused by fixed page display for a long time.		

● Voltage & Current

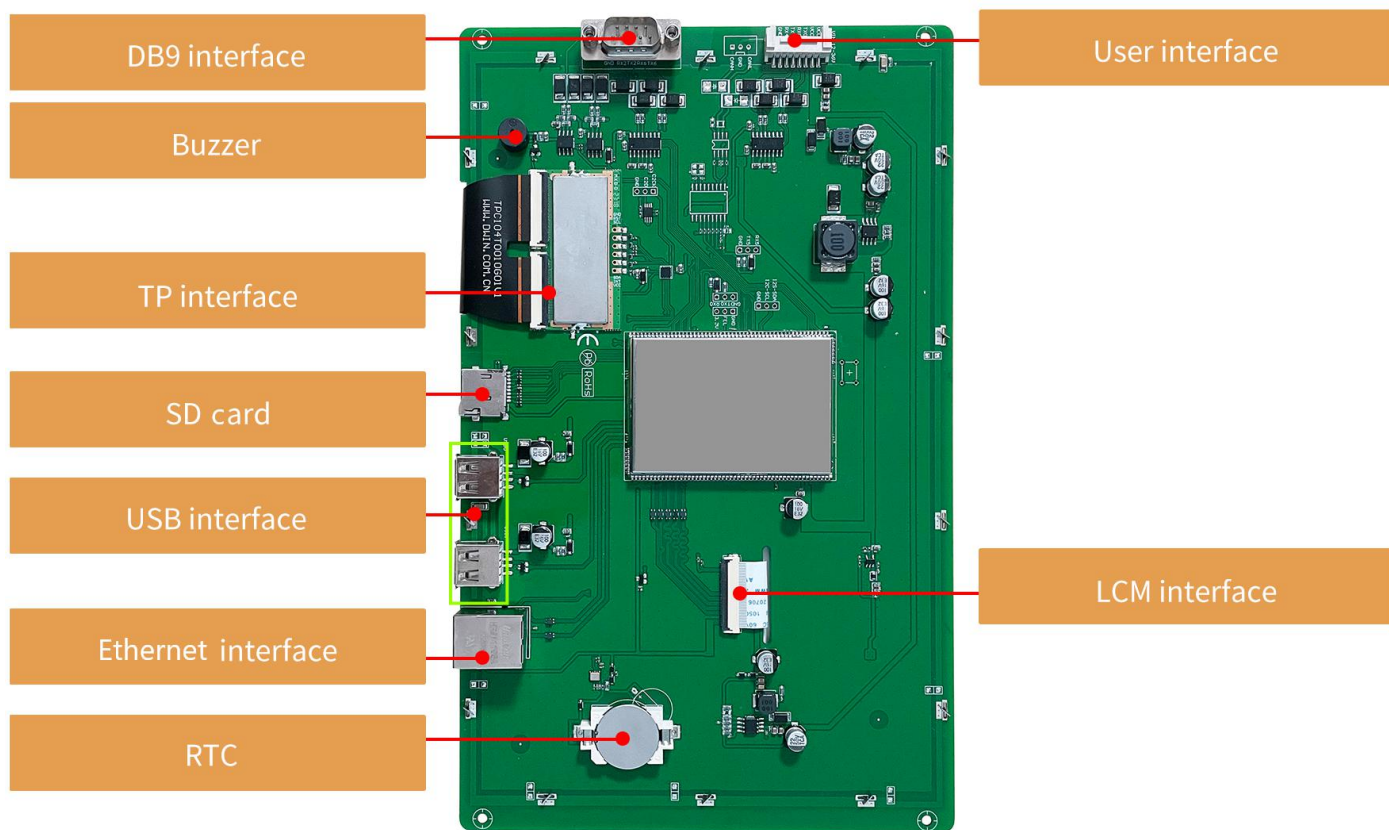
Properties	Conditions	Min	Typ.	Max	Unit
Power Voltage	-	12.0	12.0	36.0	V
Operation Current	VCC = +12V, 100% brightness	-	510	-	mA
	VCC = +12V, Backlight off	-	150	-	mA
Recommended power supply: 12V 1A DC					

● Reliability Test

Properties	Conditions	Min	Typ.	Max	Unit
Working Temperature	60%RH at 12V voltage	-20	25	70	
Storage Temperature	-	-30	25	80	
Working Humidity	25°C	10%	60%	90%	RH
Conformal Coating	Yes				
ESD	Air discharge 8KV, Contact discharge 6KV				
EFT	Group pulse interference 2KV				

● Peripheral and Interfaces

Properties	Parameters	Description
COM	4-way RS232	UART0& UART2 & UART4 & UART6
	1-way RS422	UART3
CAN interface	-	Reserved CAN interface
USB interface	2-way	HOST*2
SD card slot	1-way	Drawer type card slot (Max 64G)
Ethernet interface	1-way	10/100Mbps
RTC	Built-in	Button cell for power supply, Accuracy: 20ppm @25
Buzzer	Built-in	3V passive buzzer



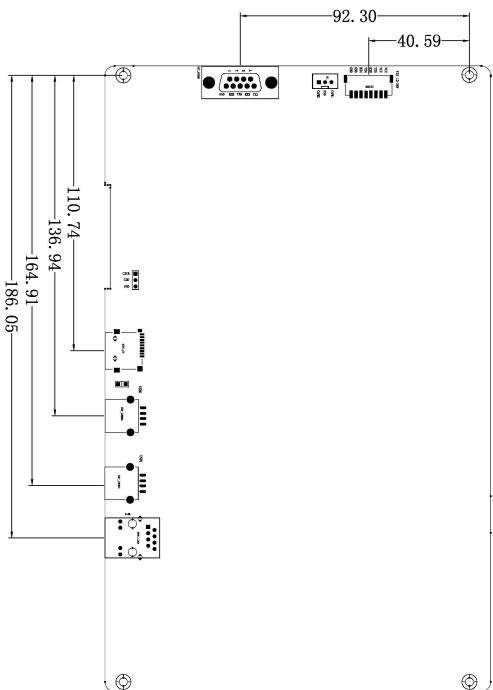
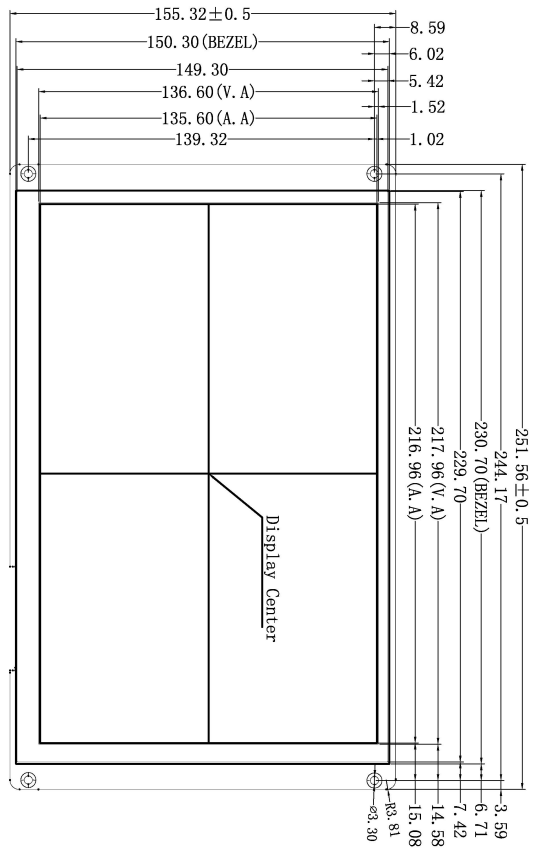
● Interface Parameters

Properties	Conditions	Min	Typ.	Max	Unit
Baud Rate	User-defined	3150	115200	3225600	bps
Output Voltage (TXD)	Output 1	-	-5.0	-3.0	V
	Output 0	3.0	5.0	-	V
Input Voltage (RXD)	Input 1	-15.0	-5.0	-	V
	Input 0	-	5.0	15.0	V
Interface	RS232*4 RS422*1				
Socket	8Pin_2.0mm Socket, DB9 Socket				

● Packing Capacity & Dimension

Dimension				
Dimension	251.6(W)*155.3(H)*23.4(T)mm			
Net Weight	545g			
Packing Capacity				
Model	Size	Layer	Quantity/Layer	Quantity (Pcs)
Carton1	220mm(L)*160mm(W)*47mm(H)	-	-	-
Carton2	250mm(L)*200mm(W)*80mm(H)	-	-	-
Carton3	320mm(L)*270mm(W)*80mm(H)	2	1	2
Carton4	450mm(L)*350mm(W)*300mm(H)	1	10	10
Carton5	600mm(L)*450mm(W)*300mm(H)	1	16	16

Disclaimer: The product design is subject to alternation and improvement without prior notice.



1. Location hole is used as position reference.
 2. Unmarked Tolerance is $\pm 0.3\text{mm}$
- Active area is marked in Dash Lines

Definition	Pin#	I/O	Description
CANL	1	CAN_L	CAN_VIL
GND	3	P	GND
CANH	4	CAN_H	CAN_VIH
Definition	Pin#	I/O	Description
VCC	1,2	P	Power Input
TX0	3	0	UART0 Dout
RX0	4	I	UART0 DIN
TX4	5	0	UART4 Dout
RX4	6	I	UART4 DIN
GND	7,8	P	GND
Definition	Pin#	I/O	Description
A	1	-	RS422
B	2	-	RS422
Y	3	-	RS422
Z	4	-	RS422
GND	5	P	GND
RX2	6	I	UART2 DIN
TX2	7	0	UART2 Dout
RX6	8	I	UART6 DIN
TX6	9	0	UART6 Dout

Model		DMG12800T101-35WTC		
Drawing	A 4	Drawn	G. Y	Date
Scale	1:1	Review		Date
Unit	MM	Approval		Date
DWIN Technologies				

Revision records

Rev	Revise Date	Content	Editor
00	2022-12-12	Package, Interface Picture and Format Update	YML
01	2022-12-26	Properties Update	YML

Please contact us if you have any questions about the use of this document or our products, or if you would like to know the latest information about our products:

Customer service Tel: +86-400-018-9008

Customer service E-mail: dwinhmi@dwin.com.cn

Website: www.dwin-global.com

DWIN Developer Forum: <https://forums.dwin-global.com/index.php/forums>

Thank you all for continuous support of DWIN, and your approval is the driving force of our progress!