

# DMT10600T070\_35WTC



## Features:

- Industrial Linux intelligent display terminal based on Allwinner A40i, running Linux3.10 operating system.
- 7.0-inch, 1024\*600 pixels resolution, 16.7M colors, IPS-TFT-LCD, wide viewing angle, capacitive touch, with shell.
- Adopt QT environment for secondary development.
- Available for multi-language, vector font library, picture library, video library and audio library.
- Connect to a PC with a network cable to download and update projects.
- Available for RS232, RS422 and Ethernet port to connect and communicate with external devices.

### ● Master Control Parameters

Properties	Parameters
Motherboard Level	Industrial
CPU	Allwinner A40i Quad-core ARM CortexTM-A7 Processor
OS	Linux3.10
FLASH	8Gbytes EMMC
RAM	1Gbytes DDR3

### ● Display Parameters

Properties	Parameters	Description
Color	16.7M (16777216) colors	24-bit color 8R8G8B
Panel Type	IPS	IPS LCD with wide view angle
Viewing Angle	85/85/85/85 (L/R/U/D)	Best view angle: symmetrical
Active Area (A.A.)	154.20mm(W)*85.88mm(H)	-
View Area (V.A.)	155.0mm(W)*87.5mm(H)	-
Resolution	1024*600	Available for 0°/90°/180°/270°rotated display
Backlight	LED	≥30000H (time of the brightness decaying to 50% on the condition of continuous working with the maximum brightness)
Brightness	250nit	100 levels adjustment (It's not recommended to set brightness to 1%~30% of the maximum, which may lead to LCD flicker.)

Note: You can use dynamic screen saver wallpapers to avoid afterimages caused by fixed page display for a long time.

### ● Voltage & Current

Properties	Conditions	Min	Typ.	Max	Unit
Power Voltage	-	9.0	12.0	36.0	V
Operation Current	VCC = +12V, 100% brightness	-	280	-	mA
	VCC = +12V, Backlight off	-	110	-	mA

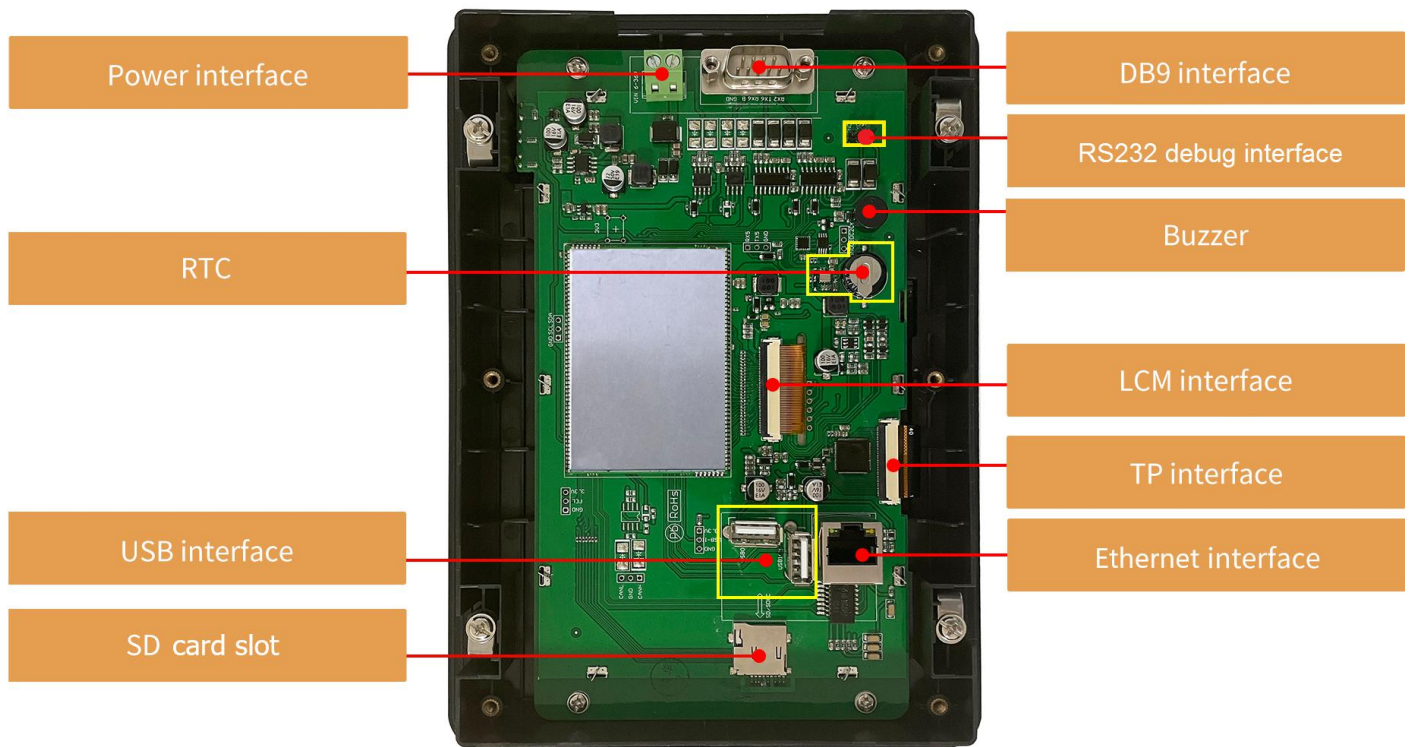
Recommended power supply: 12V 0.5A DC

### ● Reliability Test

Properties	Conditions	Min	Typ.	Max	Unit
Working Temperature	60%RH at 12V voltage	-20	25	70	℃
Storage Temperature	-	-30	25	80	℃
Working Humidity	25℃	10%	60%	90%	RH
Conformal Coating	Yes				
ESD	Air discharge ±8KV				
EFT	Group pulse interference ±2KV				

● Peripheral and Interfaces

Properties	Parameters	Description
COM	2-way RS232	UART2 & UART6
	1-way RS422	UART3
USB Interface	2-way	HOST*2
SD Card Slot	1-way	Drawer type card slot(Max 64G)
Ethernet Interface	1-way	10/100Mbps
RTC	Built-in	Super-capacitor RTC, Accuracy: $\pm 20\text{ppm}$ @25°C
Buzzer	Built-in	3V passive buzzer



**● Interface Parameters**

Properties	Conditions	Min	Typ.	Max	Unit
Baud Rate	User-defined	3150	115200	3225600	bps
Output Voltage (TXD)	Output 1	-	-5.0	-3.0	V
	Output 0	3.0	5.0	-	V
Input Voltage (RXD)	Input 1	-15.0	-5.0	-	V
	Input 0	-	5.0	15.0	V
Interface	RS232*2 RS422*1				
Socket	2Pin-5.08mm socket, DB9 interface				

**● Packing Capacity & Dimension**

Dimension				
Dimension	210.0(W)*150.0(H)*26.9(T)mm			
Net Weight	570g			
Packing Capacity				
Model	Size	Layer	Quantity/Layer	Quantity (Pcs)
Carton1:	220mm(L)*160mm(W)*47mm(H)	-	-	-
Carton2:	250mm(L)*200mm(W)*80mm(H)	2	1	2
Carton3:	320mm(L)*270mm(W)*80mm(H)	-	-	-
Carton4:	450mm(L)*350mm(W)*300mm(H)	1	16	16
Carton5:	600mm(L)*450mm(W)*300mm(H)	1	30	30

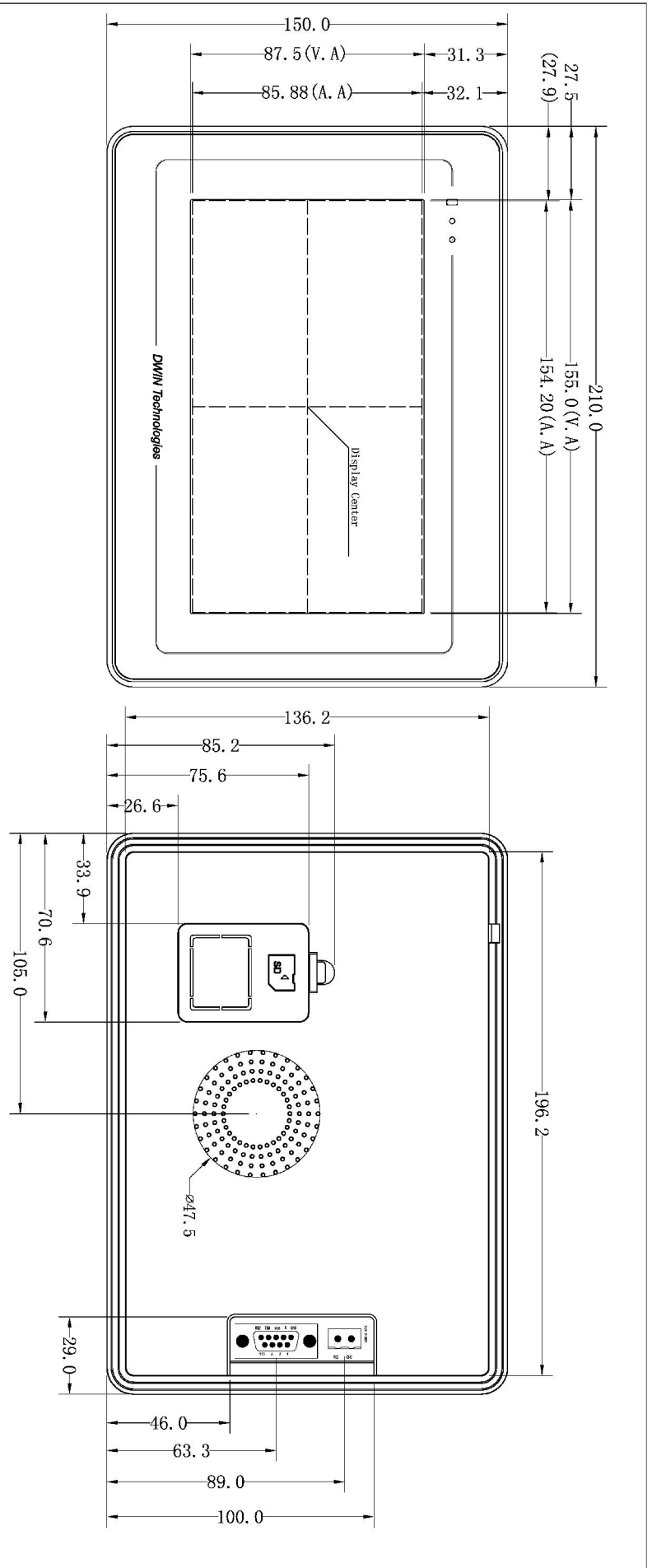
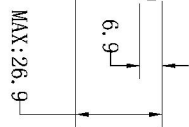
Disclaimer: The product design is subject to alternation and improvement without prior notice.

Definition	Pin#	Type	Description
RX2	1	I	UART2 DIN
TX6	2	O	UART6 DOUT
RX6	3	I	UART6 DIN
B	4	-	RS422
GND	5	P	GND
TX2	6	O	DOUT
A	7	-	RS422
Z	8	-	RS422
Y	9	-	RS422

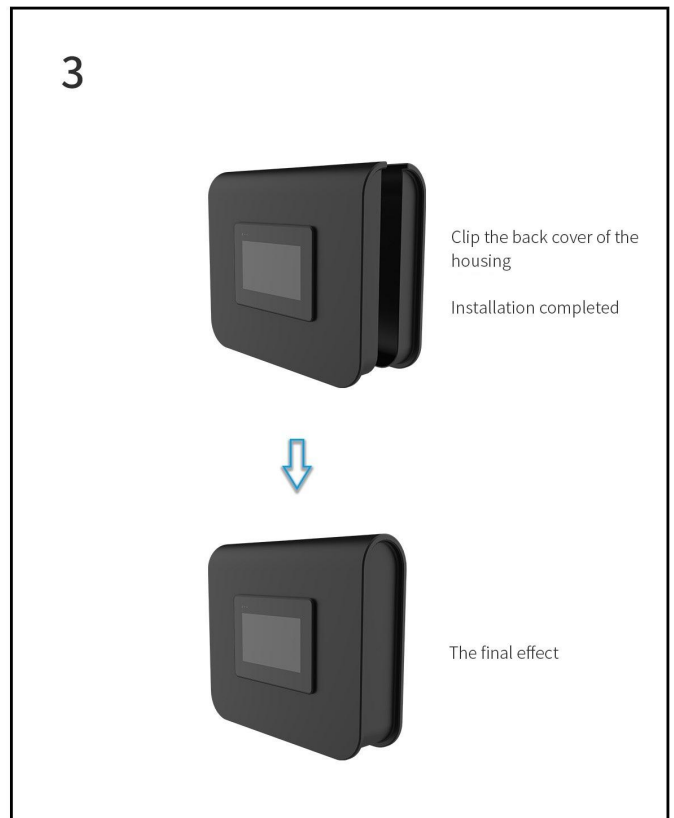
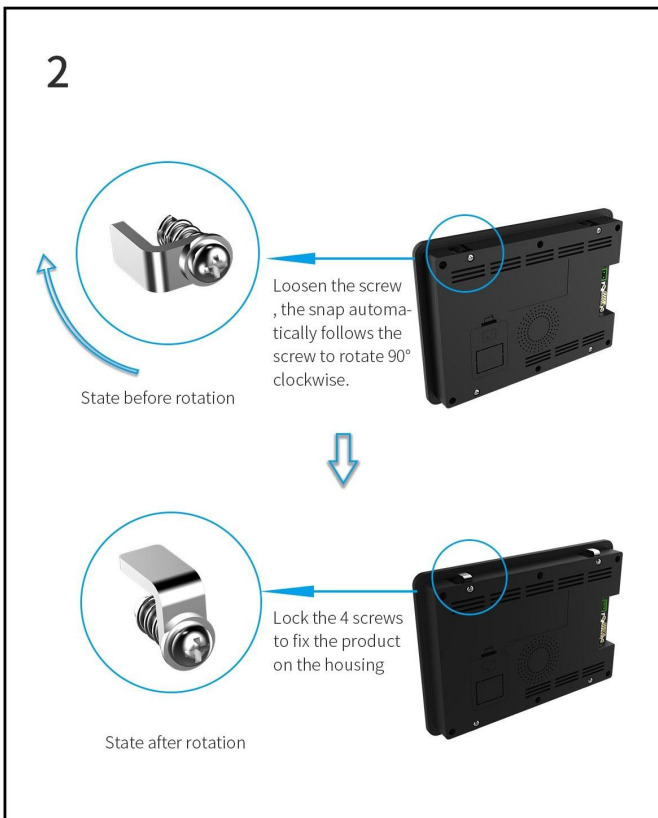
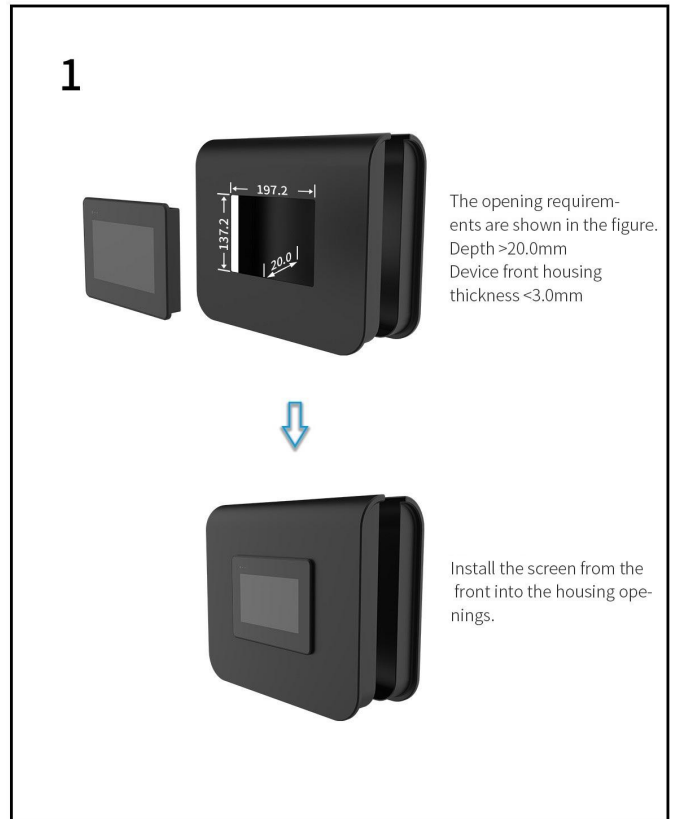
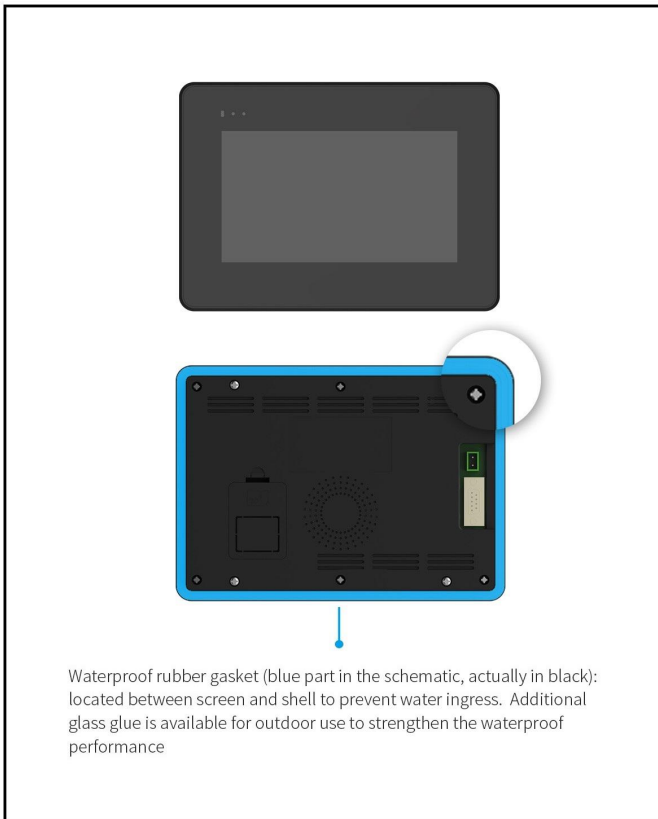
Definition	Pin#	Type	Description
VCC	1	P	Power Input
GND	2	P	GND

Model		DWIN		Date		Beijing DWIN Technology Co., Ltd
Drawing	A 4	Drawn	DWIN	Date		
Scale	1:1	Review		Date		
Unit	MM	Approval		Date		

1. Location hole is used as position reference.
  2. Unmarked Tolerance is +/-0.3mm
- Active area is marked in Dash Lines



# Installation Schematic



**Revision records**

<b>Rev</b>	<b>Revise Date</b>	<b>Content</b>	<b>Editor</b>
00	2022-10-25	First Edition	Lvzhi Chen
01	2022-12-12	Package, Interface Picture and Format Update	YML

Please contact us if you have any questions about the use of this document or our products, or if you would like to know the latest information about our products:

Customer service Tel: +86-400-018-9008

Customer service E-mail: [dwinhmi@dwin.com.cn](mailto:dwinhmi@dwin.com.cn)

Website: [www.dwin-global.com](http://www.dwin-global.com)

DWIN Developer Forum: <https://forums.dwin-global.com/index.php/forums>

Thank you all for continuous support of DWIN, and your approval is the driving force of our progress!