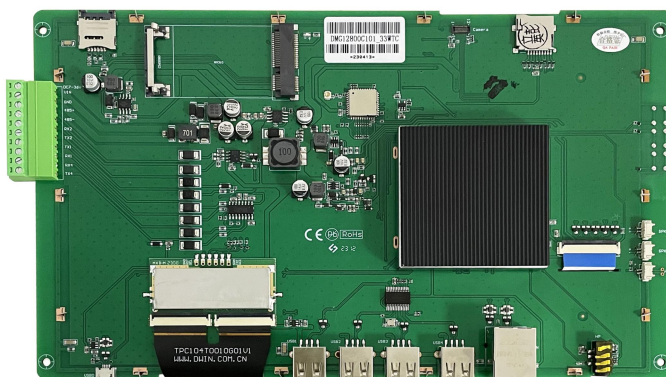
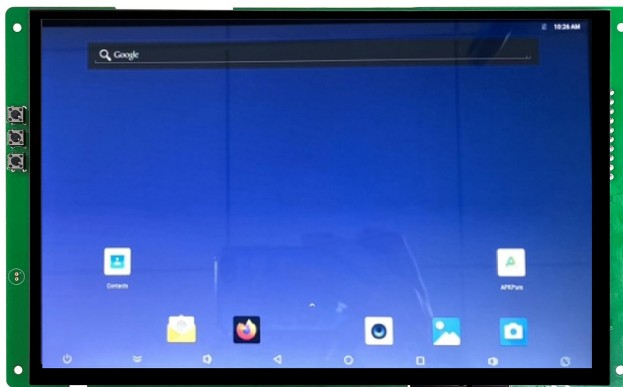


DMG12800C101_33WTC



Features:

- Commercial Android intelligent display terminal based on RK3288, running Android 8.1 operating system.
- 10.1-inch, 1280*800 pixels resolution, 16.7M colors, IPS-TFT-LCD, wide viewing angle, capacitive touch.
- Compatible with WIFI, Bluetooth, microphone, camera and other rich peripherals.
- Available for USB and SD card updates.
- Available for downloading Android general apps to realize functions such as WiFi, wired internet, browsing, music and video playback, data copy, etc.
- Available for RS232, RS485 and Ethernet port to connect and communicate with external devices.

● Master Control Parameters

Item	Description
Motherboard level	Commercial
CPU	RK3288 Quad-core 1.8GHz ARM Cortex-A17
FLASH	8Gbytes EMMC5.0
RAM	2Gbytes DDR3
OS	Android 8.1
Note:Support secondary development. (According to the standard Android interface development)	

● Display Parameters

Item	Data	Description
Color	16.7M (16777216) colors	24 bit color 8R8G8B
LCD type	IPS	IPS process TFT LCM,wide view angle
Viewing angle	85/85/85/85 (L/R/U/D)	Best view angle: symmetrical
View area(V.A.)	217.96mm (W)*136.60mm (H)	1280*800 Pixel
Active area (A.A.)	216.96mm (W)*135.60mm (H)	1280*800 Pixel
Resolution	1280*800 Pixel	Support 0°/90°/180°/270°rotated display
Backlight	LED	≥30000H(Time of the brightness decaying to 50% on the condition of continuous working with the maximum brightness)
Brightness	300nit	0~100 grade (When the brightness is adjusted to 1%~30% of the maximum brightness, flickering may occur and is not recommended to use in this range)
Note:You can use dynamic screen saver wallpapers to avoid afterimages caused by fixed page display for a long time.		

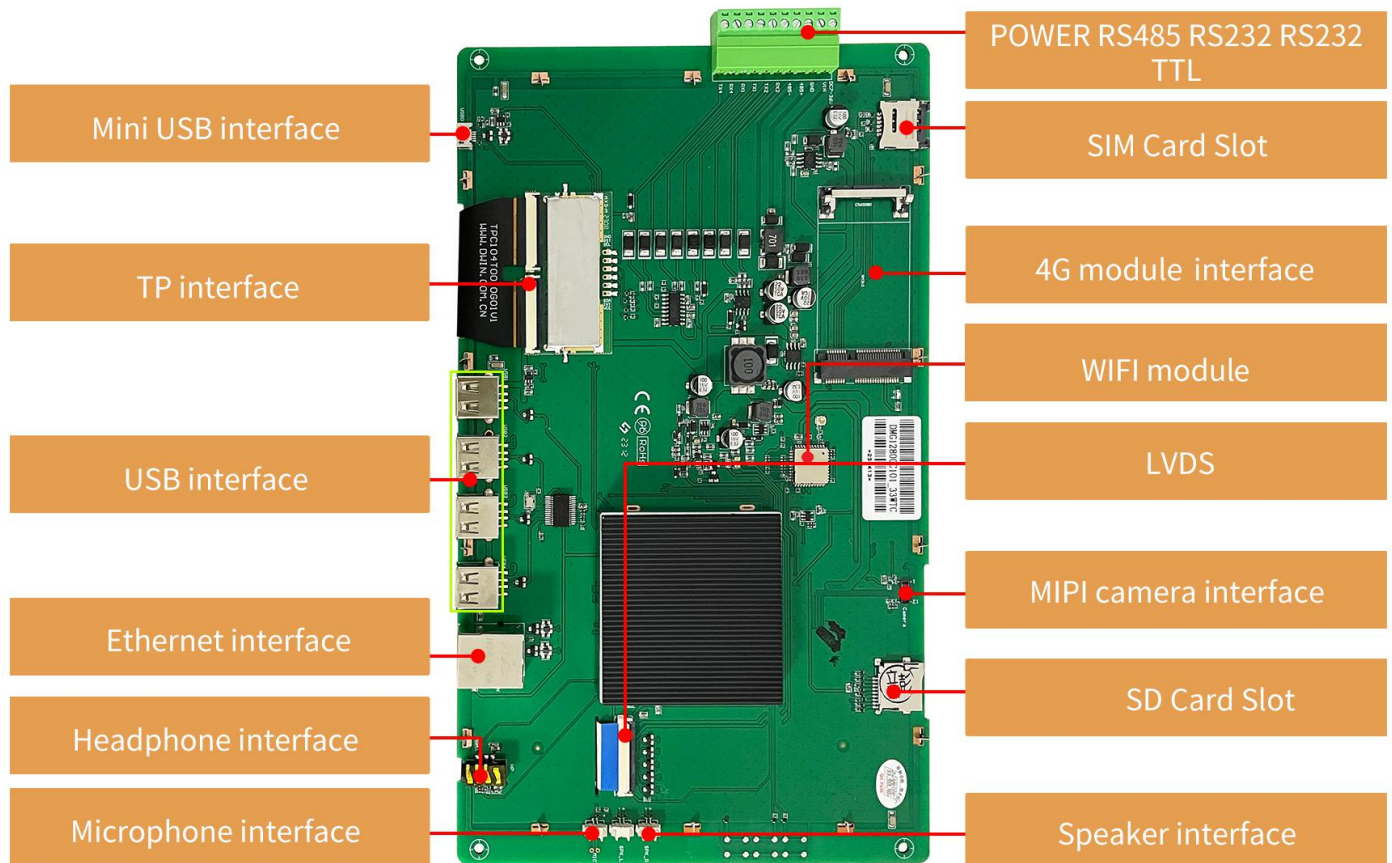
● Voltage & Current

Item	Conditions	Min	Typ.	Max	Unit
Power voltage	-	6.0	12.0	36.0	V
Operating current	VCC = +12V, backlight on	-	465	-	mA
	VCC = +12V, backlight off	-	160	-	mA
Recommended power supply: 12V 1A DC					

● Reliability Test

Item	Conditions	Min	Typ.	Max	Unit
Working temperature	60%RH at 12V voltage	-10	25	50	°C
Storage temperature	-	-20	25	60	°C
Working humidity	25°C	10%	60%	90%	RH
Protective paint	-	-	None	-	-
ESD	Air discharge ±4KV, Contact discharge ±4K				

● Interface Description



Properties	Parameters	Description
COM	2 RS232	UART1 & UART4
	1 RS485	UART3
	TTL/COMS	UART2(Debugging interface)
USB interface	5	HOST*4, OTG*1
Headphone interface	1	3.5mm spacing interface
Speaker interface	2	Left & right
Microphone interface	1	On board
Camera interface	1	Mipi & USB
SIM card slot	1	Drawer type card slot
SD card slot	1	Drawer type card slot(Max 64G)
Ethernet interface	1	10/100Mbps
WIFI interface	1	IEEE 802.11Bb/g/n,2.4G, Bluetooth
4G module	1	Factory not configured, customizable to add
Key	3	Masrom,Recover,PWRON

● Interface Definition

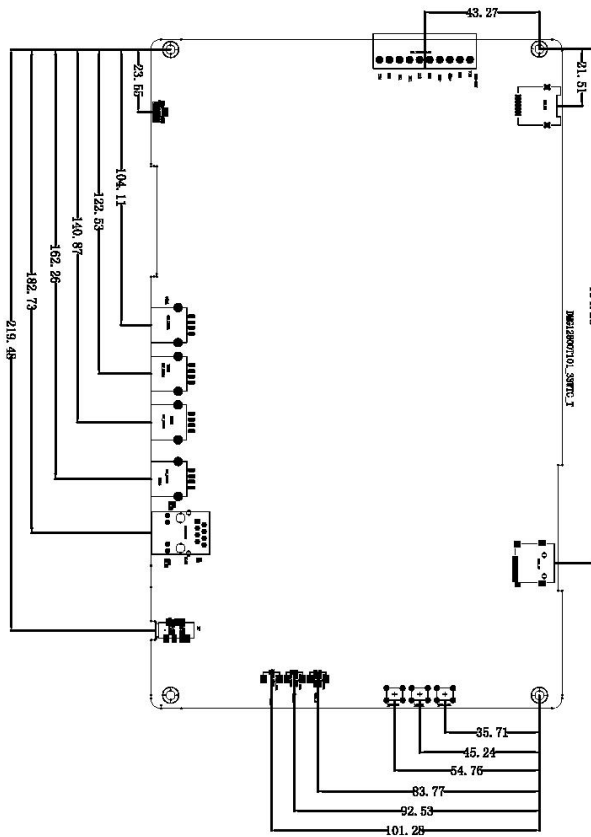
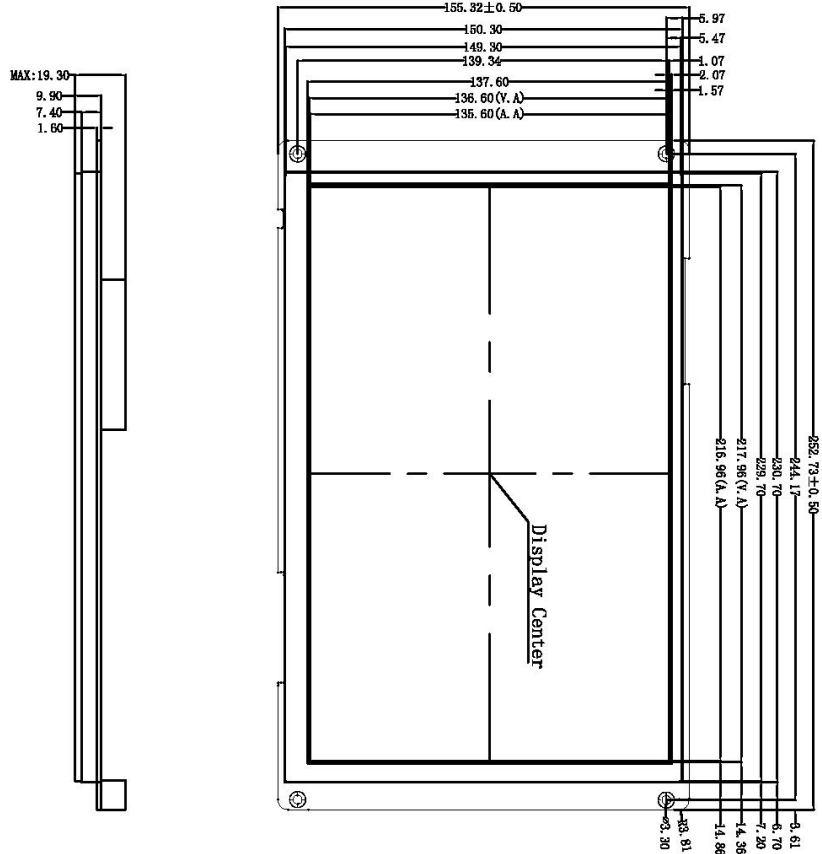
Item	Conditions	Min	Typ.	Max	Unit
UART1/4 baud rate	User Defined	2400	115200	230440	bps
UART output voltage (TXD)	Output 1	-	-5.0	-	V
	Output 0	-	5.0	-	V
UART input voltage (RXD)	Input 1	-	-5.0	-	V
	Input 0	-	5.0	-	V
UART3 baud rate	User Defined	2400	115200	921600	bps
UART output voltage level (V_AB)	Output 1	2.5	5.0	-	V
	Output 0	-	-5.0	-2.5	V
UART input voltage level (V_AB)	Input 1	0	2.5	-	V
	Input 0	-	-2.5	-0.2	V
UART mode	Support TTL/COMS, RS232 or RS485 level				
Interface cable	10Pin_3.81mm Socket				

● Packing Capacity & Dimension

Dimension				
Dimension	252.73(W)*155.32(H)*19.30(T)mm			
Net Weight	625g			
Packing Capacity				
Model	CartonSize	Layer	Quantity/Layer	Quantity(Pcs)
Carton1:	220mm(L)*160mm(W)*47mm (H)	-	-	-
Carton2:	250mm(L)*200mm(W)*80mm (H)	-	-	-
Carton3:	320mm(L)*270mm(W)*80mm (H)	2	1	2
Carton4:	450mm(L)*350mm(W)*300mm(H)	1	10	10
Carton5:	600mm(L)*450mm(W)*300mm(H)	1	16	16

Disclaimer: the data is for reference only and the information of product design that do not affect performance parameters and utilization is subject to alternation without prior notice.

Definition	Pin#	Type	Description
VIN	1	P	Power Input
GND	2	P	GND
485+	3	-	RS485+
485-	4	-	RS485-
RX2	5	I	UART2 Input
TX2	6	O	UART2 Output
RX1	7	I	UART1 Input
TX1	8	O	UART1 Output
RX4	9	I	UART4 Input
TX4	10	O	UART4 Output



Location hole is used as position reference.
 Unmarked Tolerance is $\pm 0.3\text{mm}$
 Active area is marked in Dash lines

Model	DMG12800C101-33WTC		
Drawing	A 4	Drawn	G. Y
Scale	1:1	Review	
Unit	MM	Approval	
		Date	2021.04.25

● Revision Records

Version	Revise Date	Content	Editor
00	2022-12-16	First edition	YML
01	2023-5-15	Remove the 4G module and update the physical image	YML

Please contact us if you have any questions about the use of this document or our products, or if you would like to know the latest information about our products:

Customer service Tel: +86-400-018-9008

Customer service E-mail: dwinhmi@dwin.com.cn

Website: www.dwin-global.com

DWIN Developer Forum: <https://forums.dwin-global.com/index.php/forums>

Thank you all for continuous support of DWIN, and your approval is the driving force of our progress!